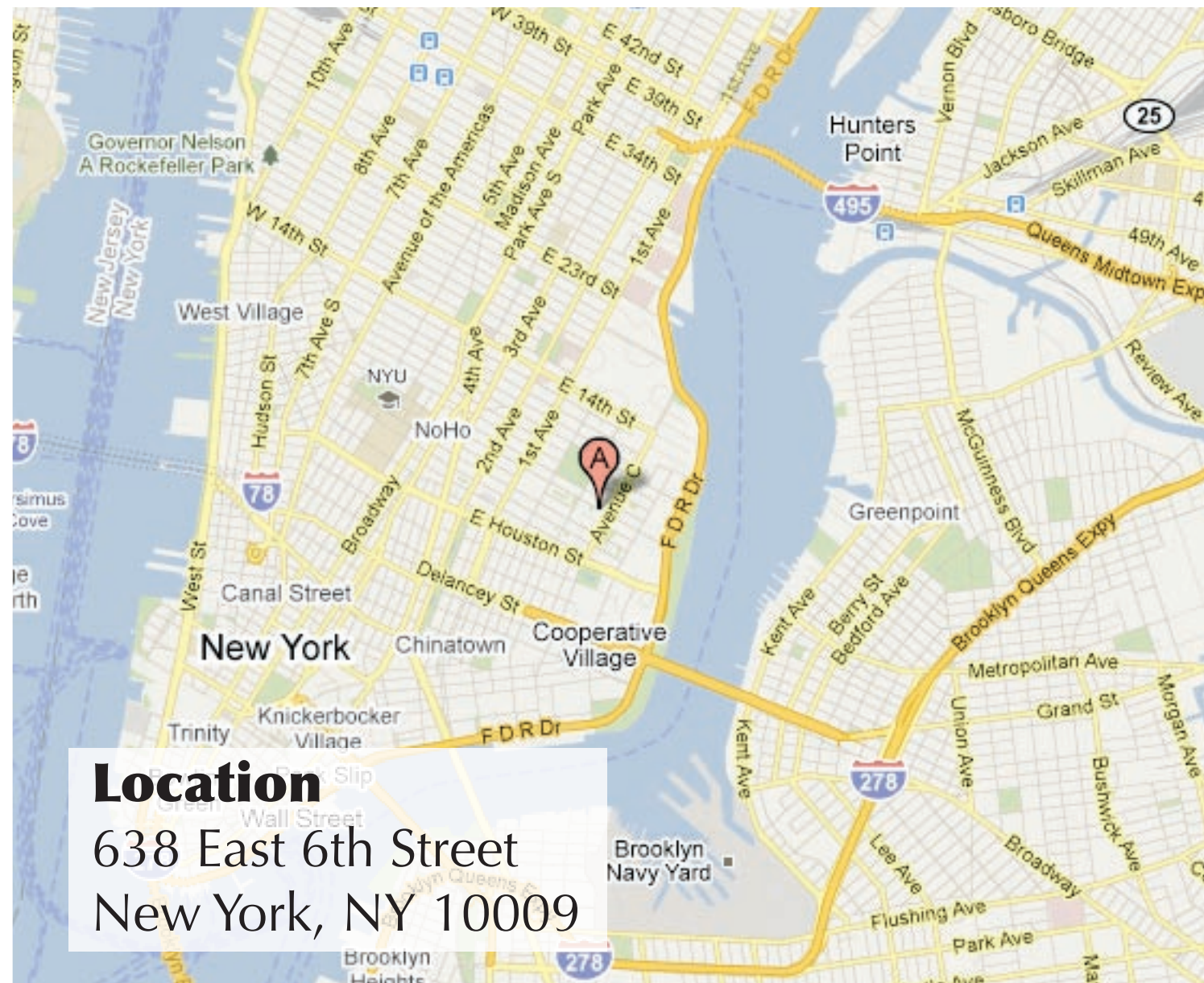


# Introduction

## 6TH STREET COMMUNITY CENTER

Jenna Spevack



Sixth Street Community Center is a not-for-profit, community based organization that offers programs to assist low and moderate-income residents.

Current goals are to (1) further the education of young people in areas of sustainable agriculture, nutrition and health, (2) expand community supported agriculture in the neighborhood, especially for low-income residents, and (3) strengthen food safety laws through a campaign against genetic engineering.

# Community Ecology

6TH STREET COMMUNITY CENTER

Jenna Spevack



The history of the Lower East Side and its independent/survivalist spirit is a very important part of the Sixth Street Community Center. It can be seen in the early 20th century tenement labor movements, the gardening/homesteading movements of the 1970's, and the current local food movement.

A desire for connection to the community's past struggles and victories is evident among many community leaders and residents.

The Community Center's murals, commemorating the neighborhood's labor history, surround the former synagogue's memorial plaques. This integration of historical records illuminates the assemblage of neighborhood populations that have shared similar struggles and dreams.

# Permaculture Design Goals

## 6TH STREET COMMUNITY CENTER

Jenna Spevack



**GOAL:** Strengthen collaborations with community to bring residents together around issues of sustainable agriculture, health, and nutrition.

### **Recommendations:**

⇒ Utilize food waste from CSA member households and Organic Soul Café with a community **compost collection system** in collaboration with El Jardin Community Garden.

⇒ Develop an **educational farm site** for existing community center youth programs, like Seeds to Supper, and supplement CSA and Café offerings with on-site food production.

⇒ Soften cement-scape with a **green gathering space** to encourage greater interaction with natural environment and community residents.

# Permaculture Design Goals

## 6TH STREET COMMUNITY CENTER

Jenna Spevack



**GOAL:** Become a community model for efficient water use and reduction of energy needs, with a regional focus to reduce CSOs and improve air quality.

### **Recommendations:**

⇒ Integrate wasted ground and gray water, which is currently pumped into sewer, and use alternative systems, like **rainwater harvesting, gray water gardens, sub-irrigated planters,** and **sump pump aquaponics,** in order to elevate basement flooding and reduce CSO's.

⇒ Utilize green plantings, solar energy, and microclimates to reduce energy consumption.

⇒ Create a **rooftop pollinator patch** on lower roof to provide pollination site for bees and green space for Yoga Studio. This small roof garden will also cool the building in summer and help elevate drainage issues.

# Analysis & Assessment

## 6TH STREET COMMUNITY CENTER

Jenna Spevack



### **Broad-Scale (Community)**

- Base Map
- Historical
- Hydrology
- Environmental Impacts
- Household Income
- Population Under 18

### **Site-Scale**

- Base Map
- Drainage
- Microclimates
- Circulation
- Zones of Use

# Broad-Scale Community Base Map



✦ 638 East 6th Street, Between Avenues B & C, Manhattan, 10009

**Analysis & Assessment**  
6TH STREET COMMUNITY CENTER  
Jenna Spevack

# Broad-Scale Community Historical Map





✦ 638 East 6th Street, Between Avenues B & C, Manhattan, 10009

**Analysis & Assessment**  
6TH STREET COMMUNITY CENTER  
Jenna Spevack

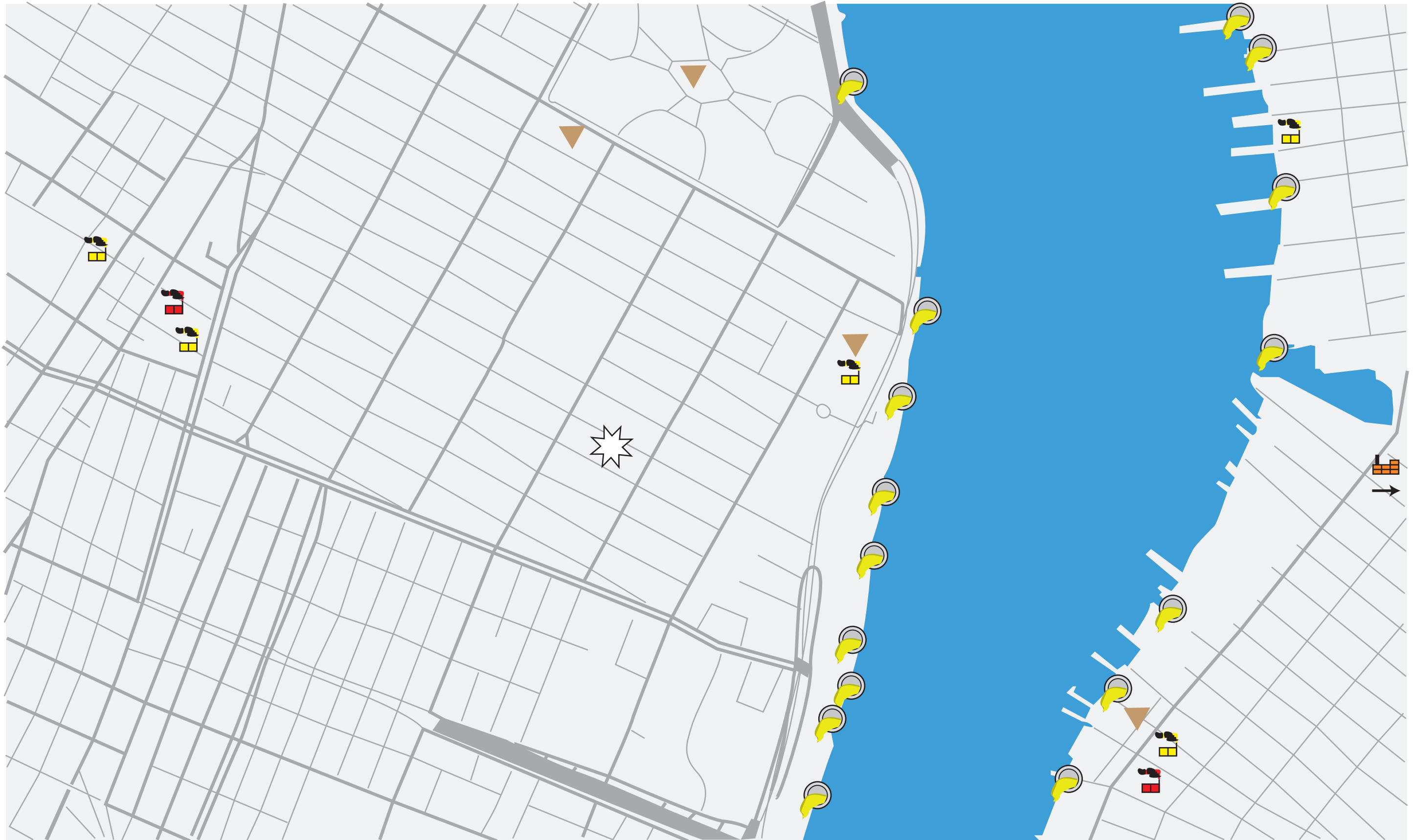
# Hydrology



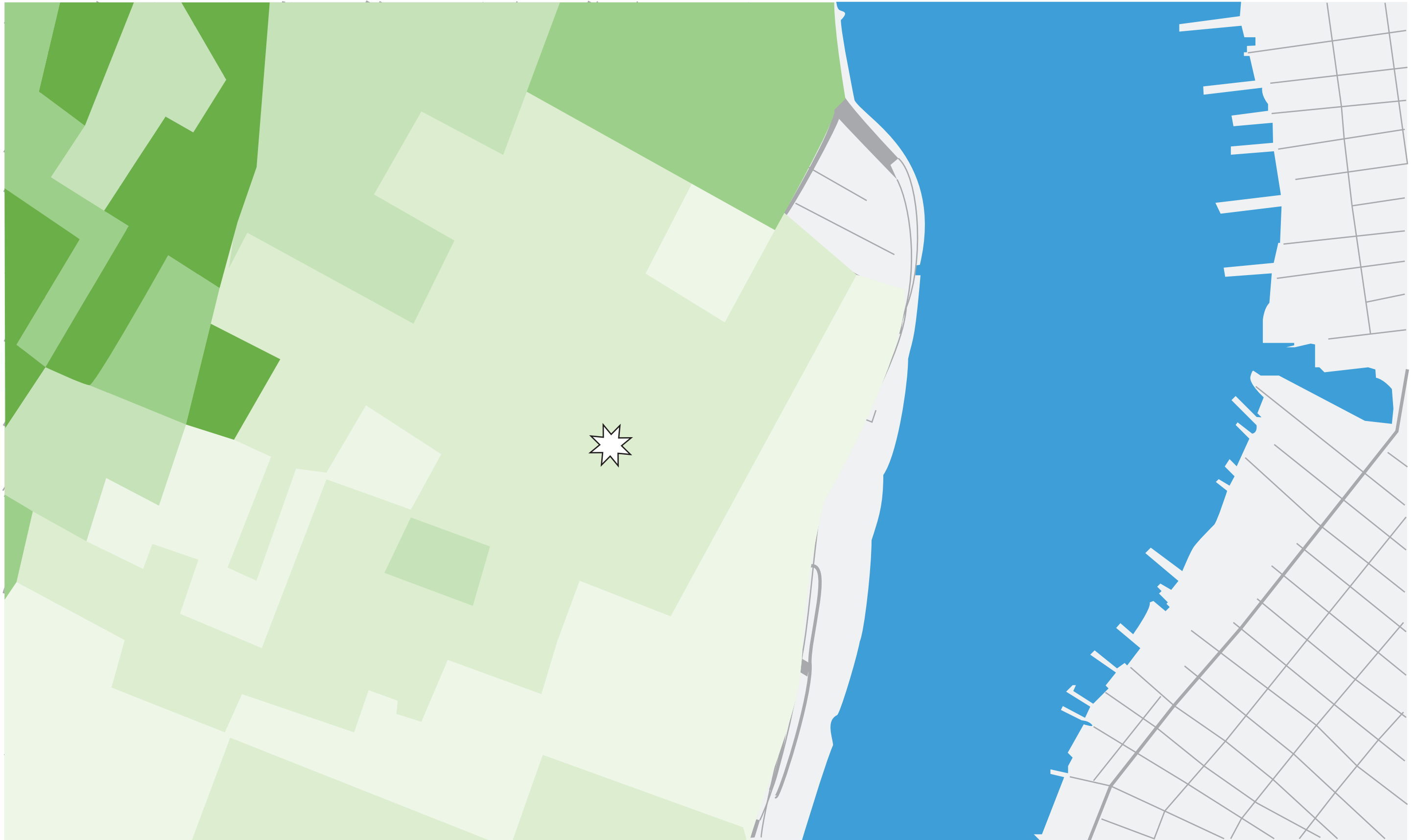
 Underground / Former Stream  Aquifer



# Environmental Influences

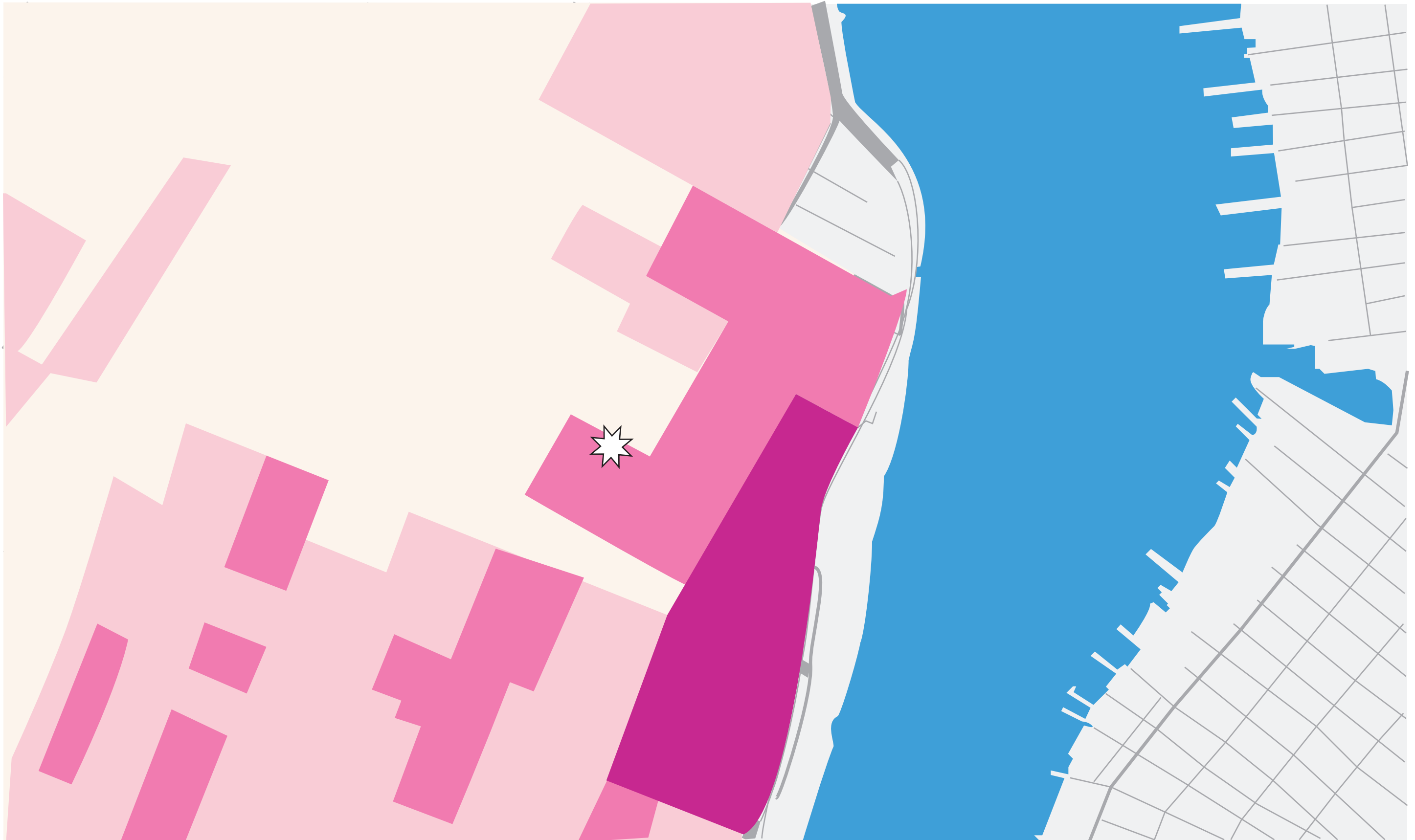


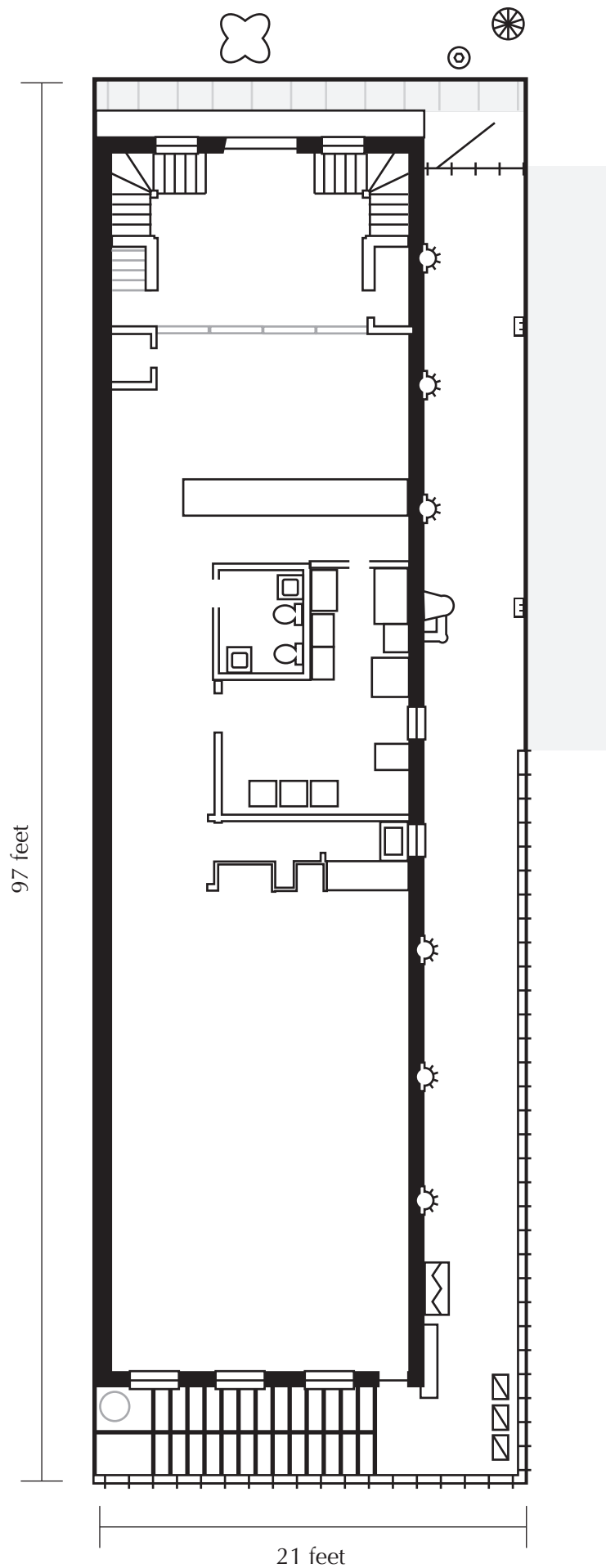
# Household Income



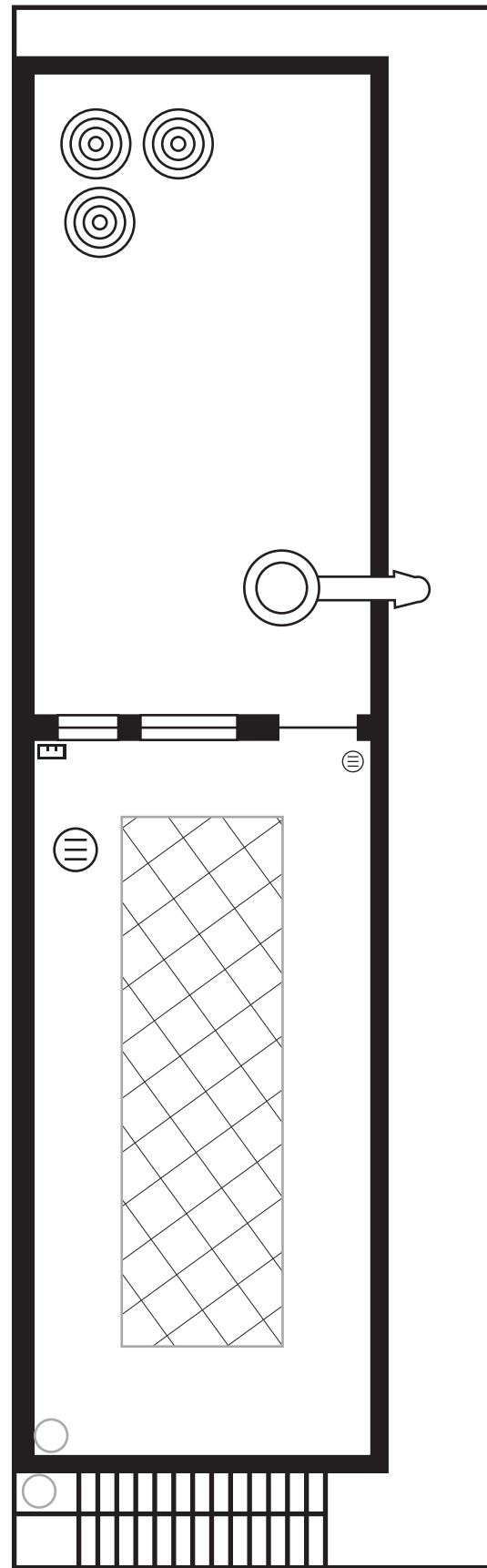
■ \$85K to 105K ■ \$105K+ ■ \$65K to 85K ■ \$45K to 65K ■ \$25K to 45K ■ < \$25K

# Population Under 18

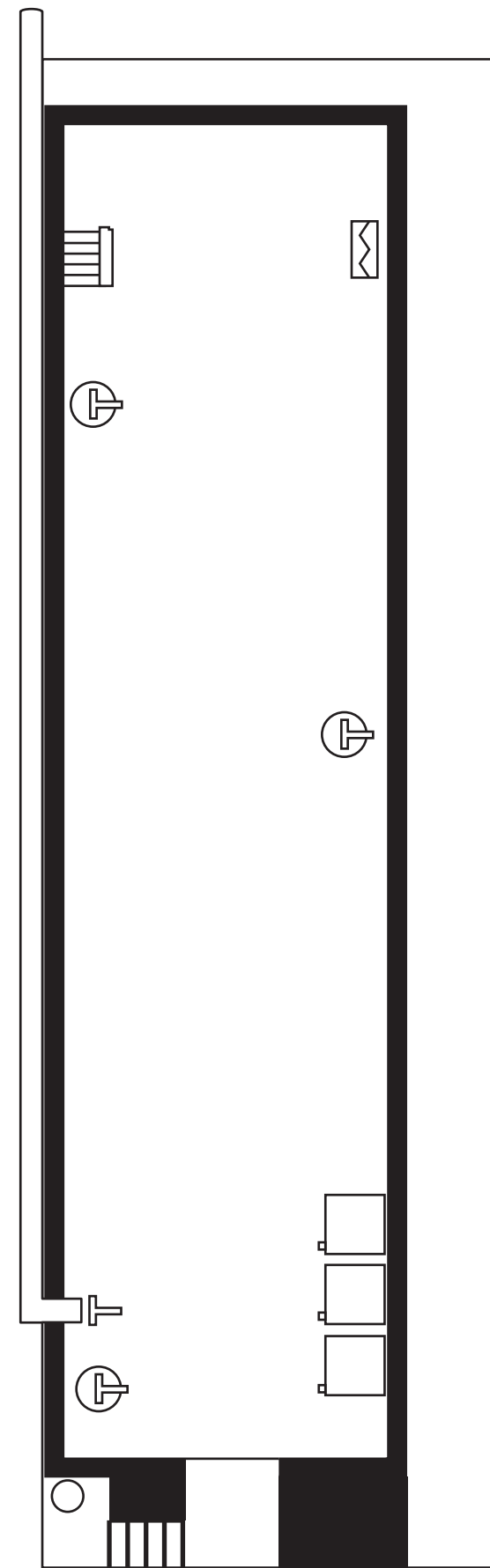




First Floor






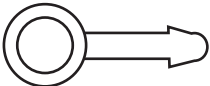






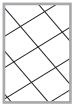




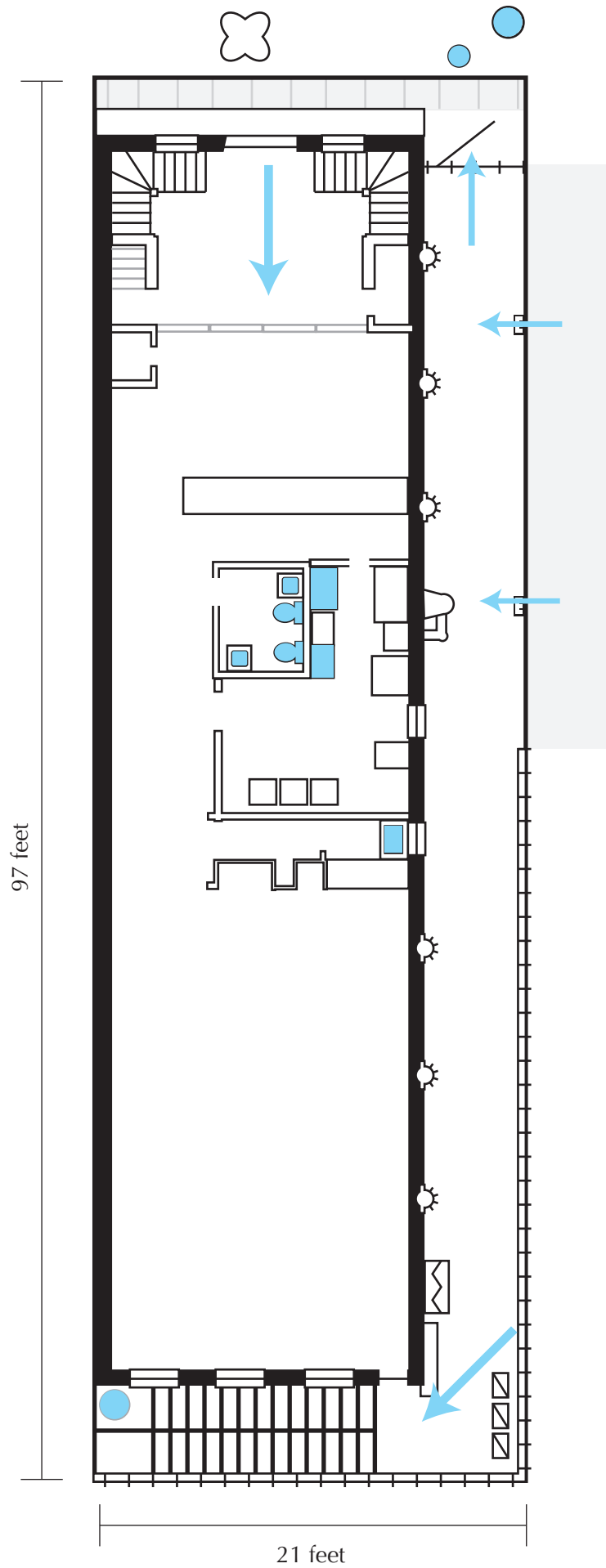
Roof



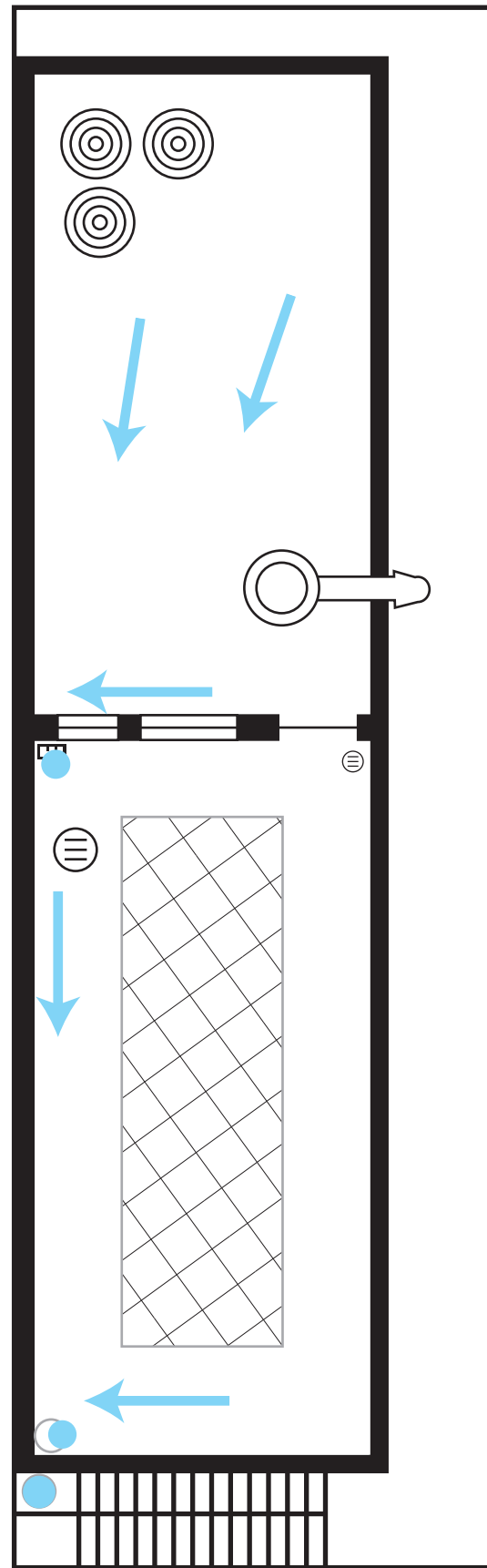
Basement

## Base Map

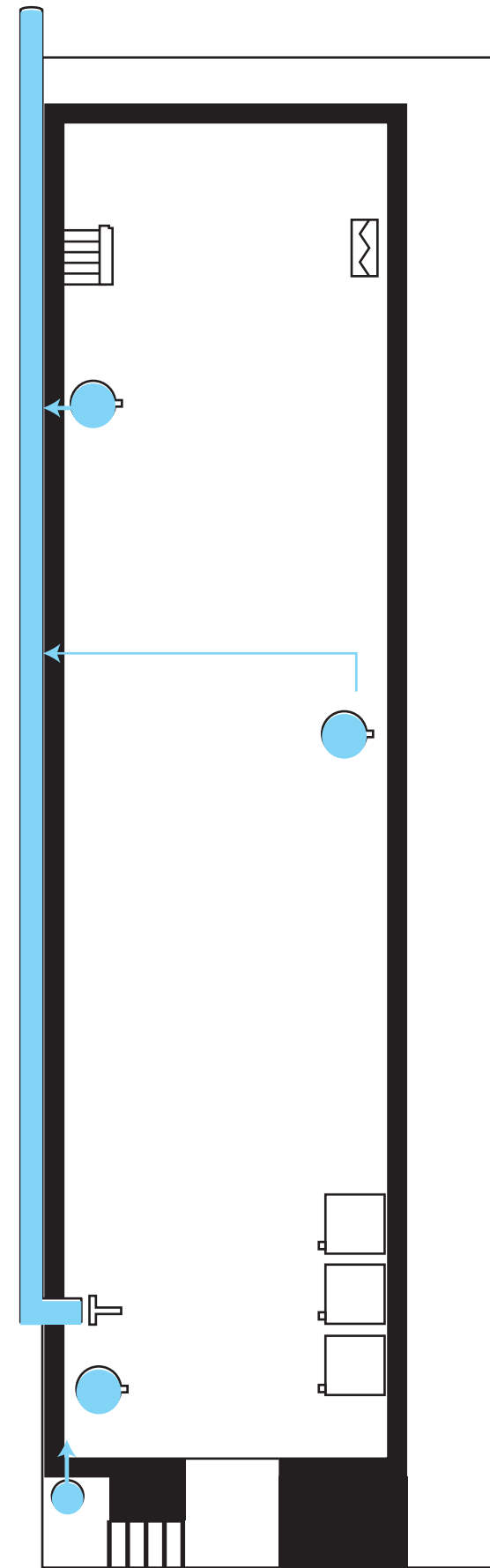
-  street tree
-  fence
-  electric
-  sewer drain
-  fire hydrant
-  exhaust
-  pipe/downspout
-  beehives
-  Compost
-  Light
-  sump pump
-  pump to sewer
-  covered skylight
-  rain gutter
-  vent



First Floor



Roof



Basement

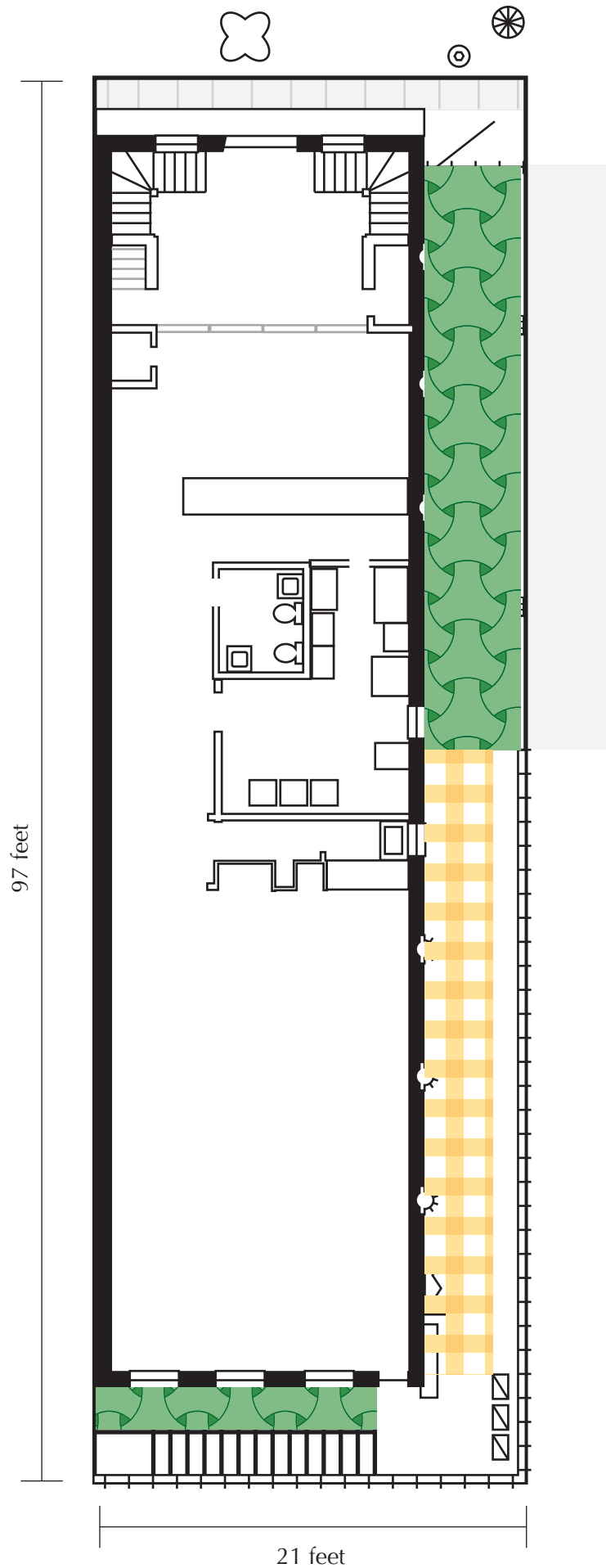
## Drainage



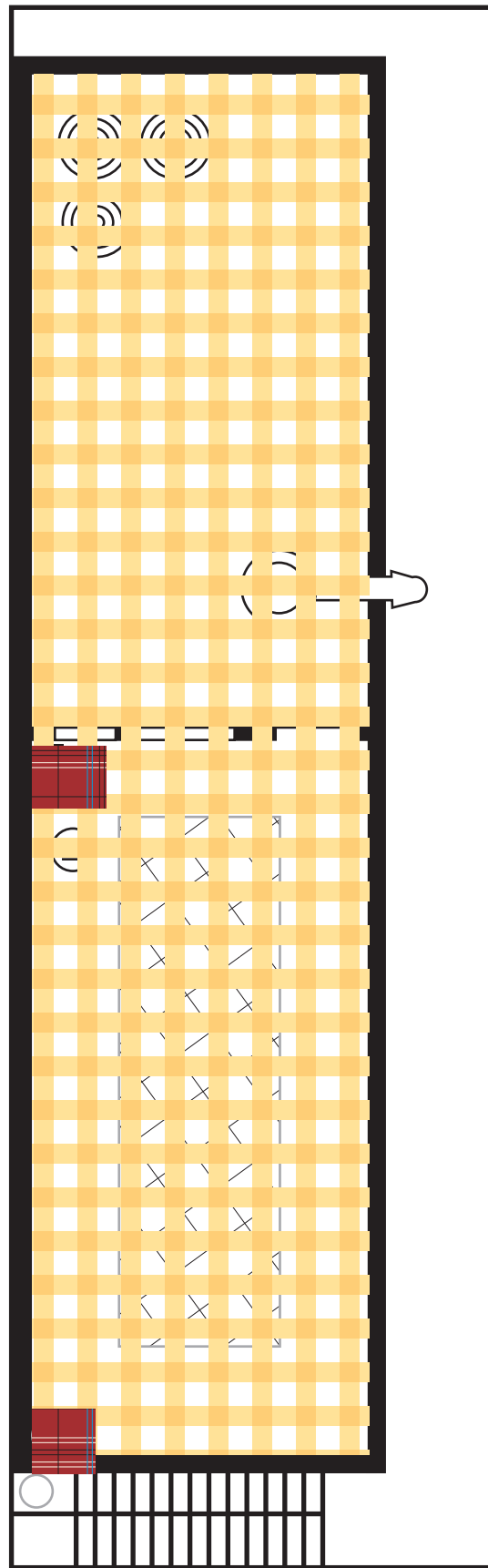
Slope / Flow



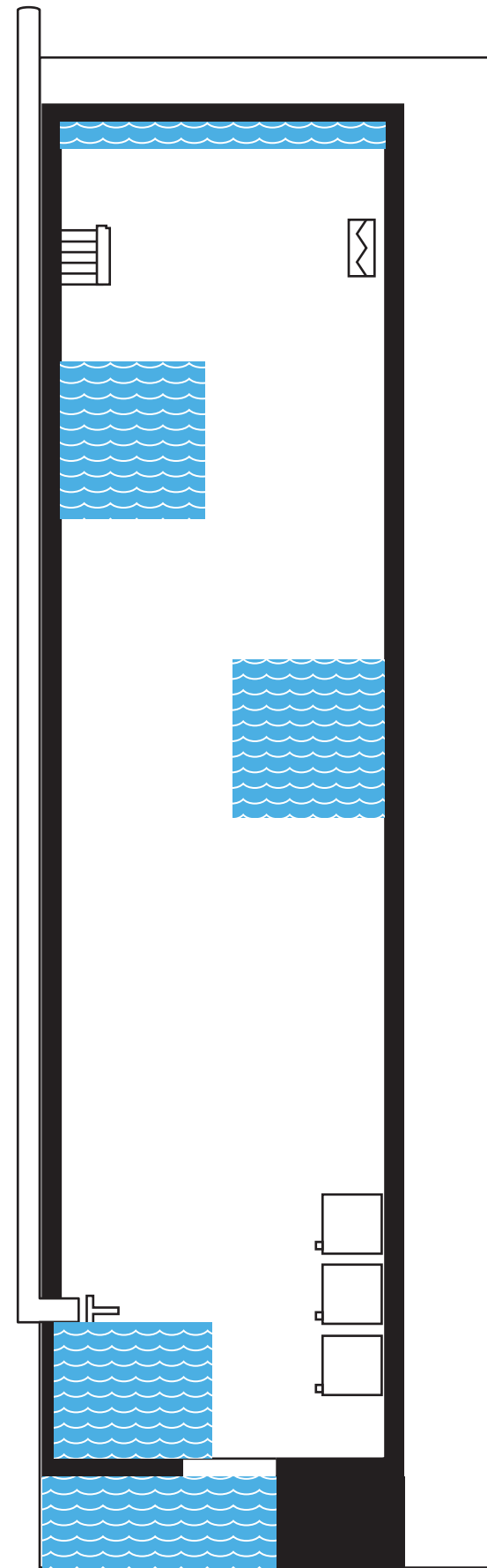
Water Source / Outlet



First Floor



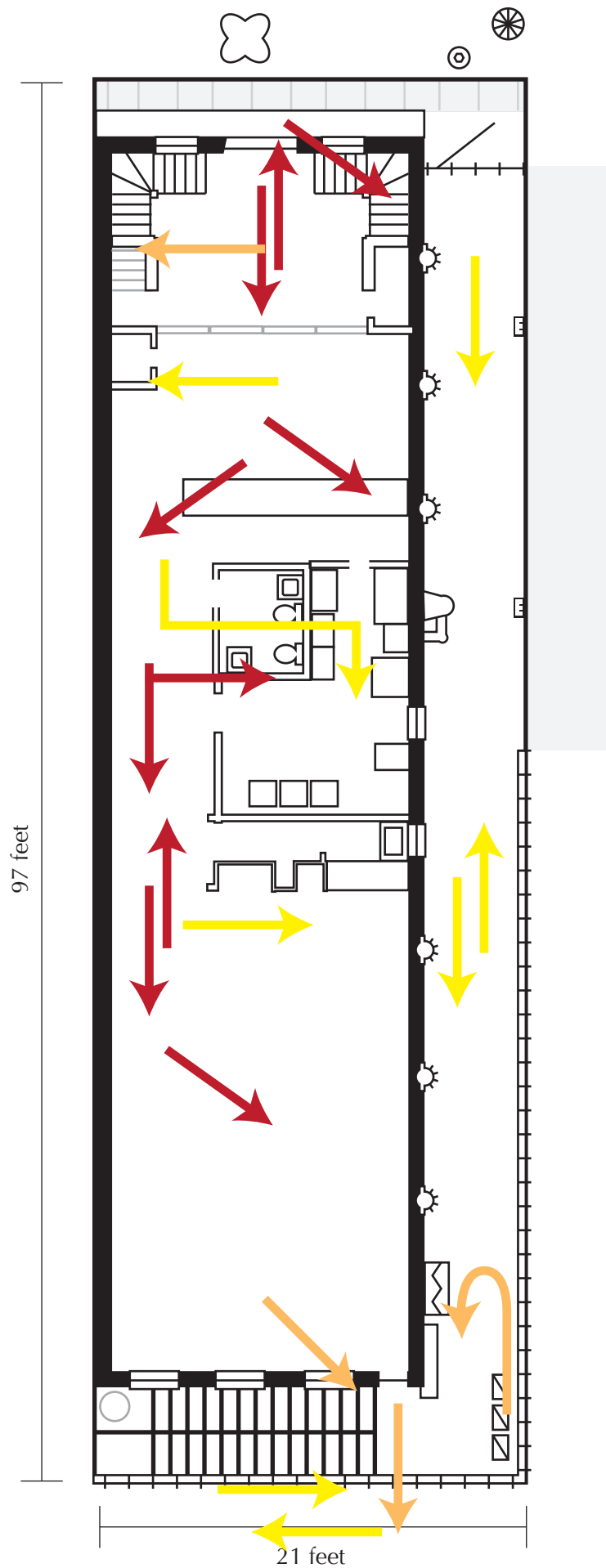
Roof



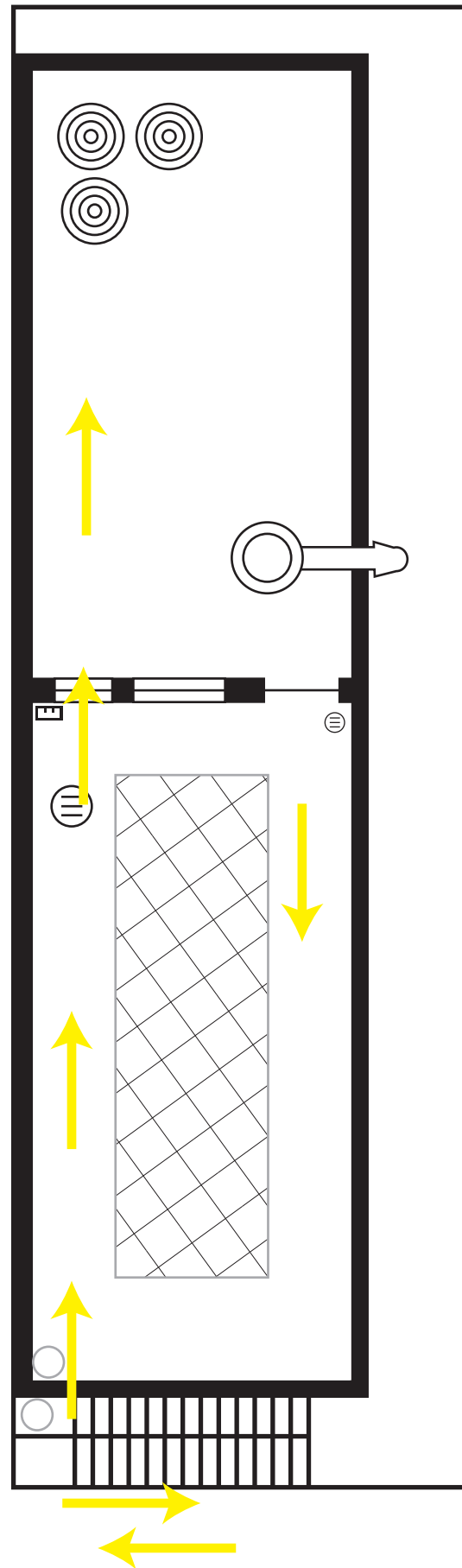
Basement

## Microclimates

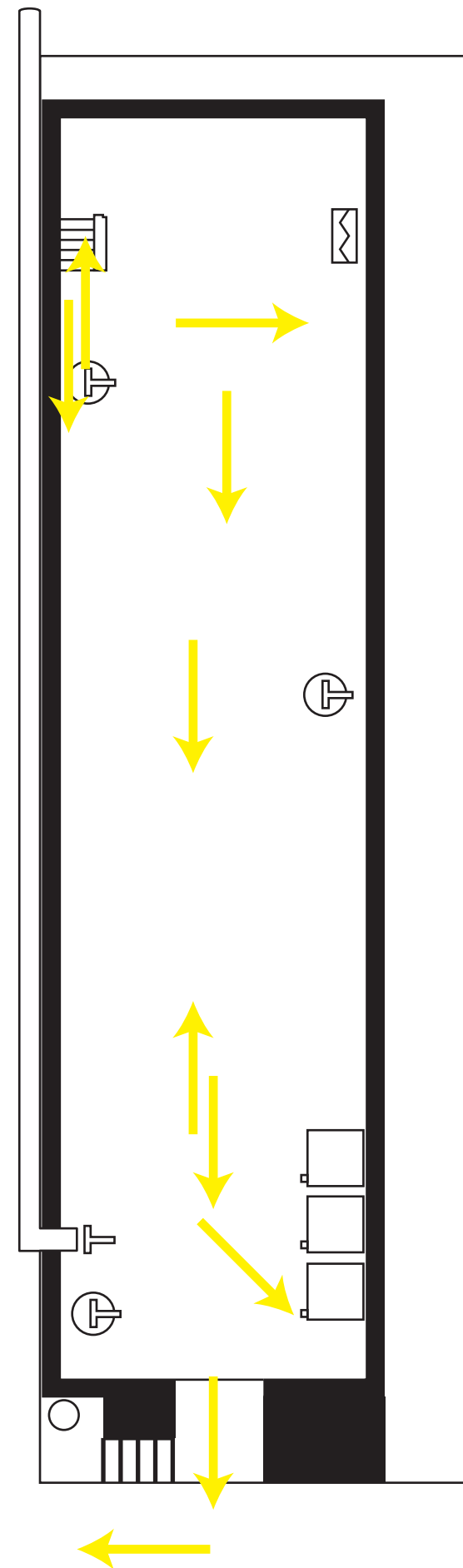
-  Sunny / Radiant Heat
-  Shade
-  Cool / Damp
-  Warm / Damp



First Floor






Roof

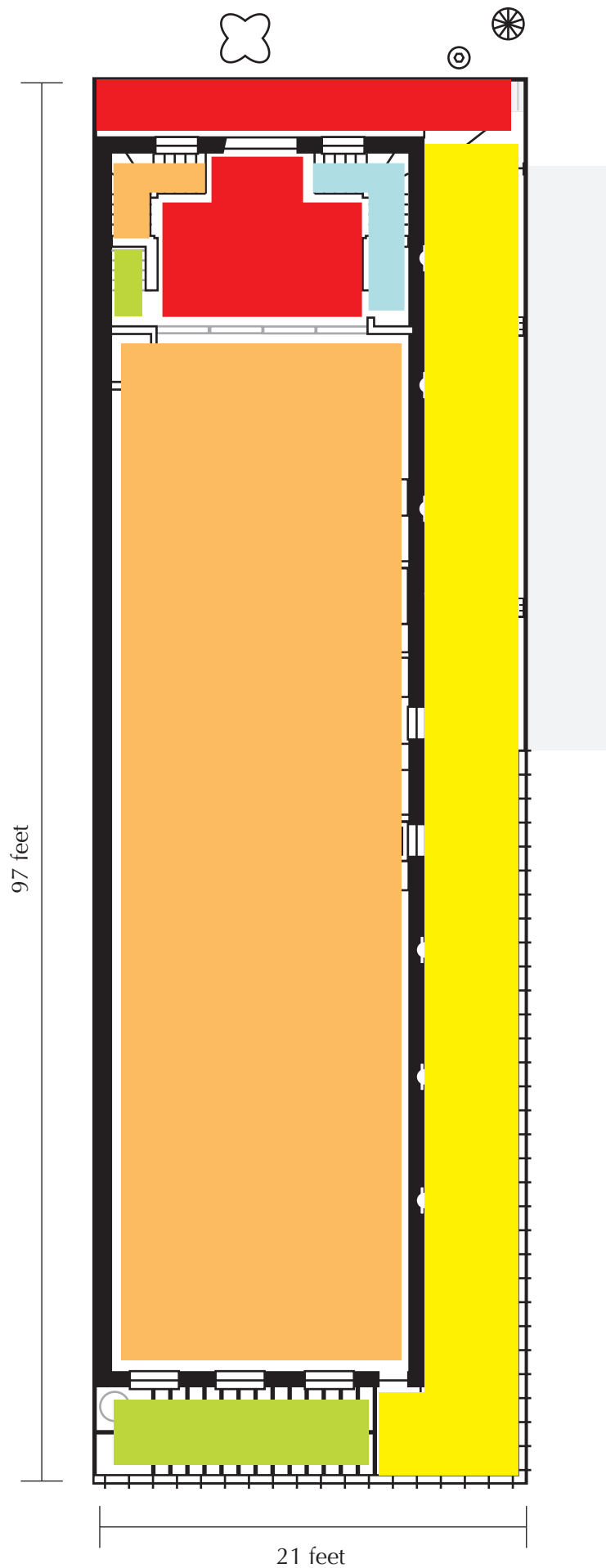


Basement

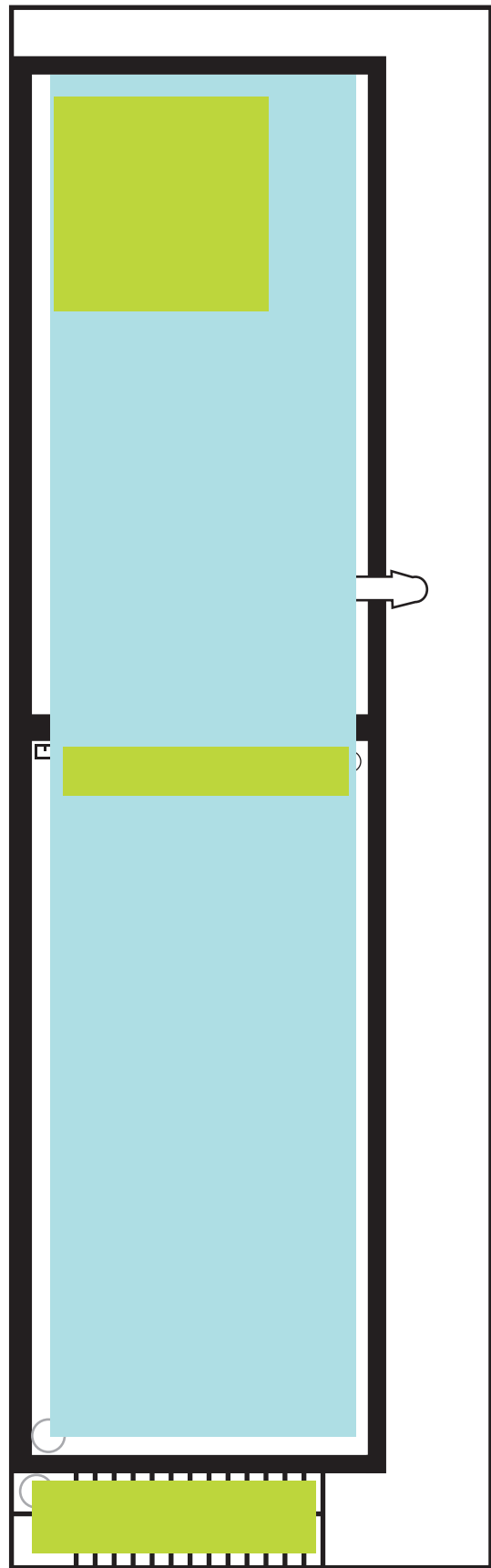
## Circulation

(Greatest number of people and frequency)

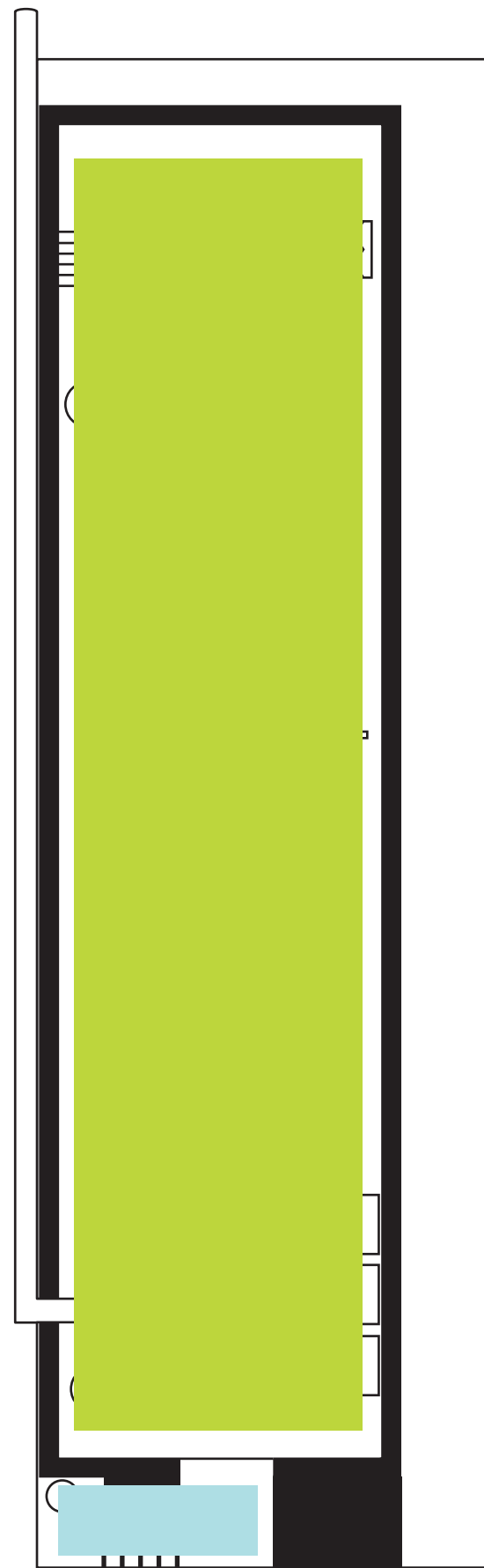
-  Primary Route
-  Secondary Route
-  Tertiary Route



First Floor








Roof



Basement

## Zones of Use

-  0 - Center of Activity
-  1 - Intensive Use
-  2 - Moderate Use
-  3 - Occasional Use
-  4 - Rare Use